

straightcurve®

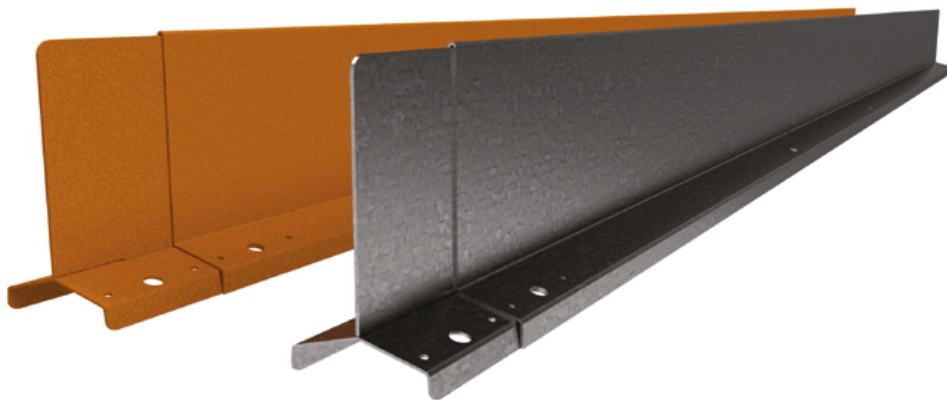
# Specifications

## 150mm Hardline™

LENGTH 2200mm | TOP THICKNESS 7mm

### FINISHES

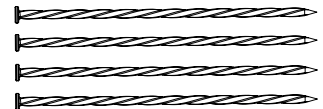
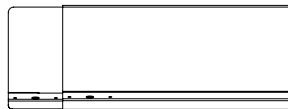
- Galvanised Steel
- Weathering Steel



Steel plate thickness 1.6mm

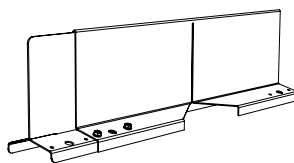
### SOLD AS SET INCLUDING

- ✓ Connector plate (pre-attached)
- ✓ 4 x galvanised spikes, 300mm long



### ADDITIONAL ACCESSORIES

- ✓ 500mm Corner piece (bend to desired angle)



# Installation guide 150mm Hardline™

*Scan me for  
Video installation!*



Scan the code or follow the link below for installation video.  
150mm Hardline™ installation video

## PREPARATIONS

Start with a compacted base of sand or roadbase. If you want to use this product in an existing garden and can't compact, dig holes at nail locations, fill with quick set concrete, insert the nails through the holes into the soft concrete. Allow to dry fully and backfill.

## REQUIRED FIXINGS

- ☑ 4 x Tek Screws (12G x 16mm) or
- ☑ 4 x pop rivets (3mm shaft)

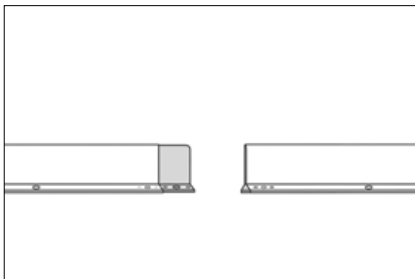
## CORNERS

Standard corners are available for purchase\*, but you can choose to make your own. Simply cut down the vertical wall and cut away a V in the shoulder foot (at least 120 degrees) on the side where you will bend it in. Make a single cut on the opposing side shoulder.

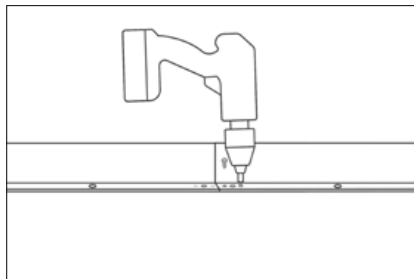
## TIP

- ☑ If cutting in your own corner, stay +/-5 mm away from the top when making the cut in the wall to get a clean finish.

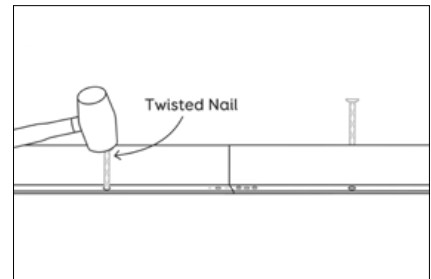
### STEP 1 - JOIN



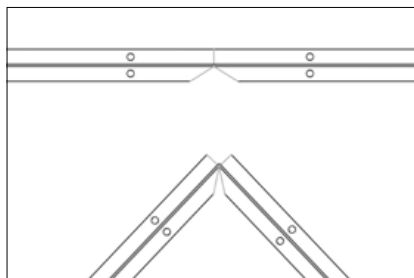
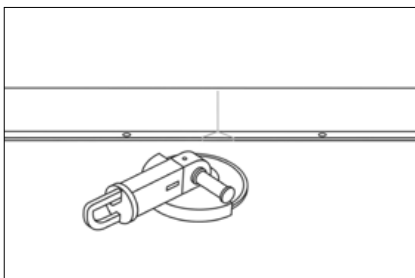
### STEP 2 - SCREW (OR RIVET)



### STEP 3 - FIX



### MAKE CORNER - NOTCH/SCORE WITH GRINDER



### PRE-MADE CORNER\*

