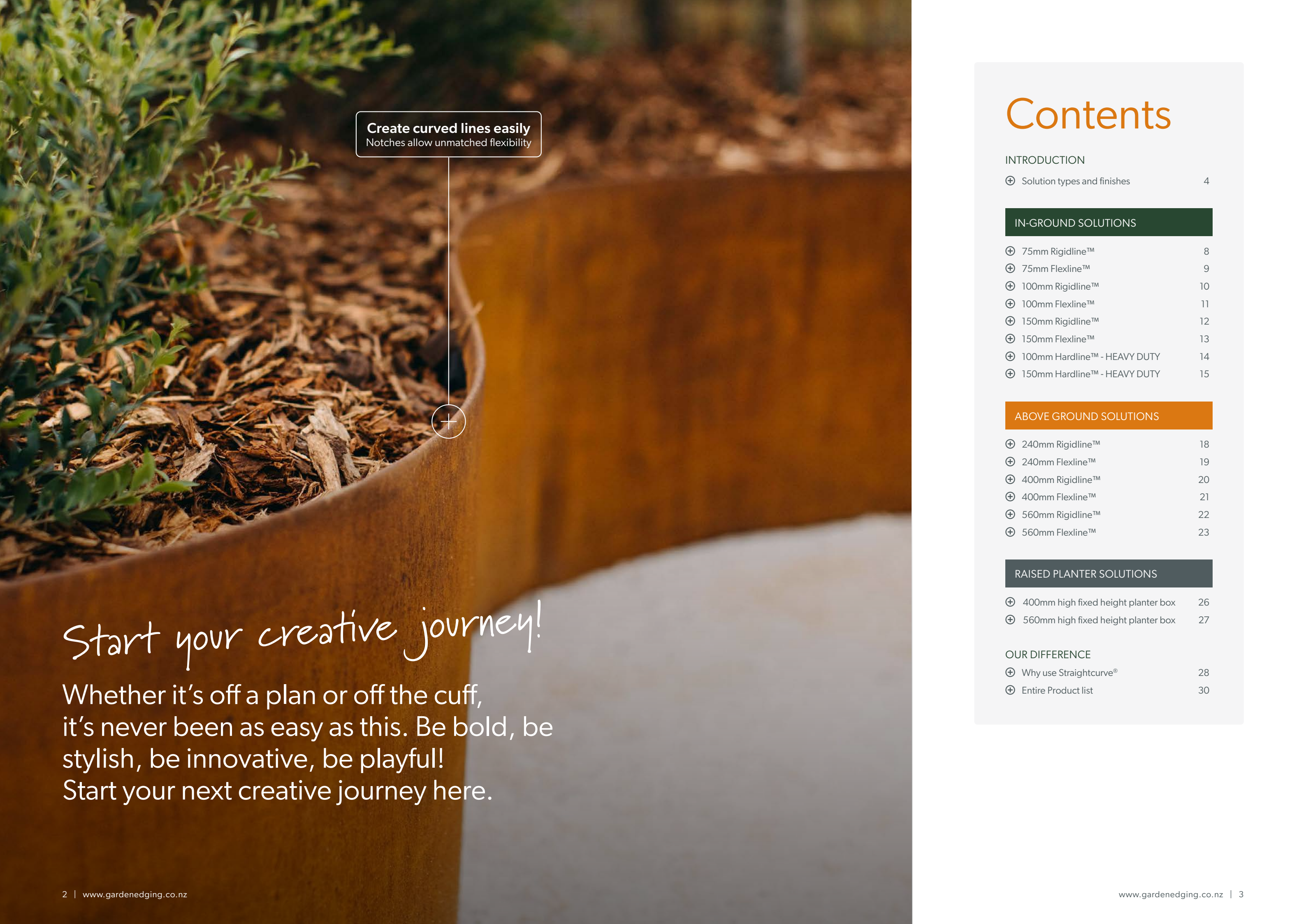


straightcurve®

Steel garden edging, retaining & planters



Simply Better



Create curved lines easily
Notches allow unmatched flexibility

Start your creative journey!

Whether it's off a plan or off the cuff,
it's never been as easy as this. Be bold, be
stylish, be innovative, be playful!
Start your next creative journey here.

Contents

INTRODUCTION	
⊕ Solution types and finishes	4
IN-GROUND SOLUTIONS	
⊕ 75mm Rigidline™	8
⊕ 75mm Flexline™	9
⊕ 100mm Rigidline™	10
⊕ 100mm Flexline™	11
⊕ 150mm Rigidline™	12
⊕ 150mm Flexline™	13
⊕ 100mm Hardline™ - HEAVY DUTY	14
⊕ 150mm Hardline™ - HEAVY DUTY	15
ABOVE GROUND SOLUTIONS	
⊕ 240mm Rigidline™	18
⊕ 240mm Flexline™	19
⊕ 400mm Rigidline™	20
⊕ 400mm Flexline™	21
⊕ 560mm Rigidline™	22
⊕ 560mm Flexline™	23
RAISED PLANTER SOLUTIONS	
⊕ 400mm high fixed height planter box	26
⊕ 560mm high fixed height planter box	27
OUR DIFFERENCE	
⊕ Why use Straightcurve®	28
⊕ Entire Product list	30



Decisions decisions... Straight or curved?

Deciding what you need or simply seeking inspiration? At some point there comes a time to choose if the lines in your garden will be straight or curving. The product range is designed to have solutions for both, so it's helpful to know just what you want!



STRAIGHT

Hardline™ is the heavy duty option for strong straights with a foot to make them sturdy, it's so grounding!

Rigidline™ is suited for firm straight lines as it is more rigid than Flexline™.



CURVED

Use the Flexline™ range for organic and flowing lines. As they flex rather than bend you can make all curves effortlessly by hand on site as you go, it comes naturally!



COMBINATIONS

It's OK to have some of each in a garden too. Our Rigidline™ will join with our Flexline™ of the same height.

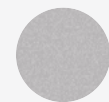
Finish choices

The entire Straightcurve® range is available in a weathering steel or galvanised finish. Perfect for whatever look you are going for!



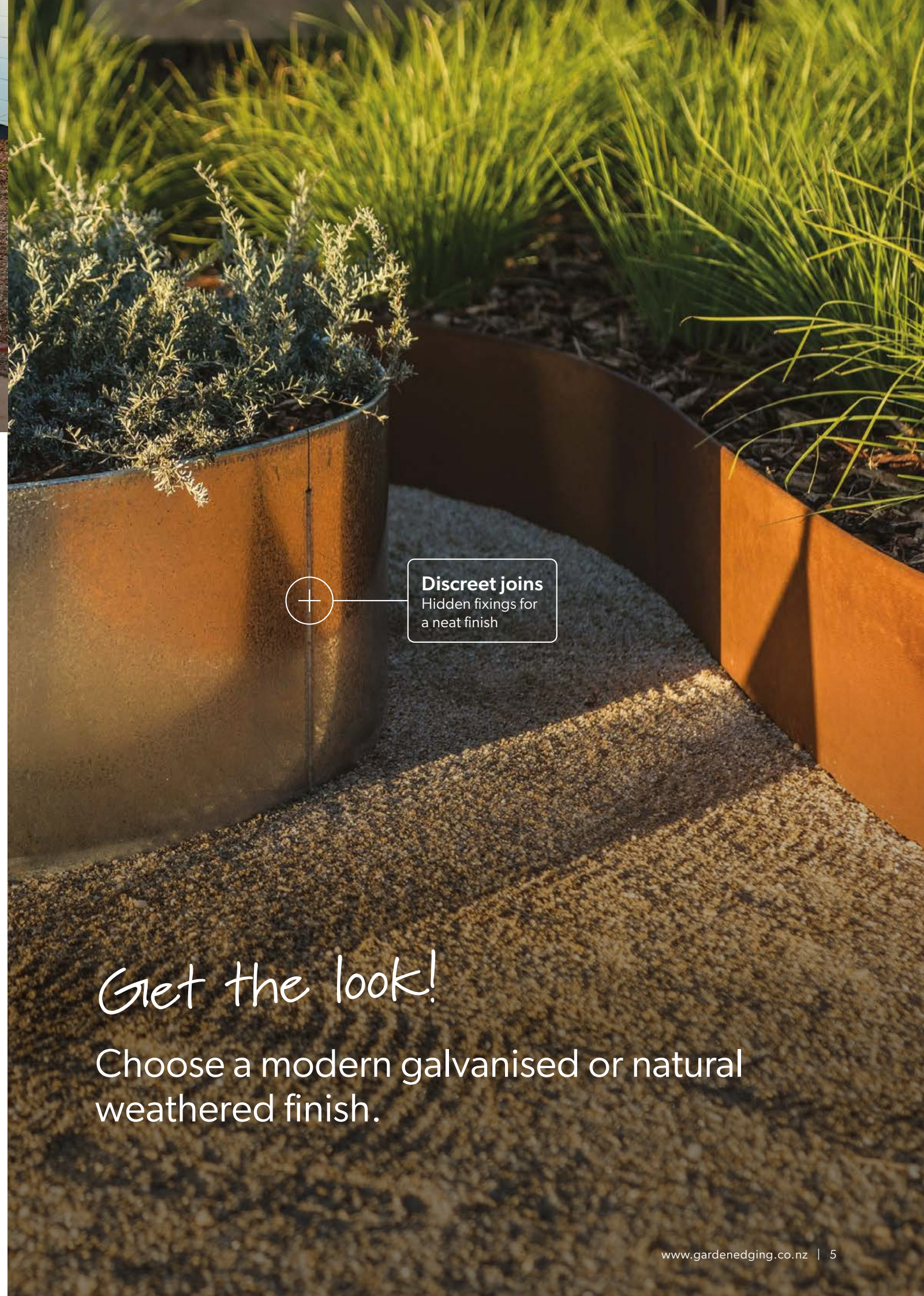
WEATHERING STEEL

Weathering steel is an alloy that develops a rusty-looking protective patina, giving a natural finish.



GALVANISED STEEL

The galvanised look is for people who prefer a grey/silver finish and is longer lasting.



Discreet joins
Hidden fixings for a neat finish

Get the look!

Choose a modern galvanised or natural weathered finish.

straightcurve®

In-ground solutions

Perfect for!

- ✓ Lawn barriers
- ✓ Pathway edges
- ✓ Separating materials like stone and mulch

Straight lines stay true
Stabilising foot prevents movement



Got to keep them separated!

Use the Hardline™ range for strong straight lines that stay true over time.



Please visit our website for full terms and conditions



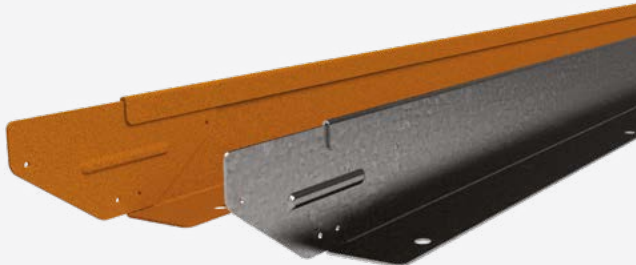
75mm high x 2200mm Rigidline™

IDEAL FOR

- ✔ Straight lines and geometric designs
- ✔ Straight garden paths and lawn areas
- ✔ Decorative stone areas
- ✔ Angular tree surrounds
- ✔ Hard soils where trenching is difficult

USE AS

- ✔ Divider between gravels/woodchips/ mulches etc
- ✔ Paving, compacted stone and artificial turf edge
- ✔ Lawn edge for non-invasive grasses



RL075WS WEATHERING STEEL
RL075GS GALVANISED STEEL

All specifications and installation
instructions can also be found here:
www.straightcurve.info/040

Download here!

MORE INFO & INSTALL GUIDE



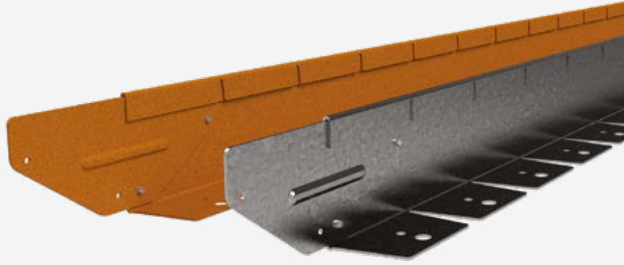
75mm high x 2200mm Flexline™

IDEAL FOR

- ✔ Organic and flowing lines
- ✔ Meandering garden paths
- ✔ Decorative stone areas
- ✔ Creating curved lawn areas
- ✔ Rounded tree surrounds
- ✔ Hard soils where trenching is difficult

USE AS

- ✔ Divider between gravels/woodchips/ mulches etc
- ✔ Paving, compacted stone and artificial turf edge
- ✔ Lawn edge for non-invasive grasses



FL075WS WEATHERING STEEL
FL075GS GALVANISED STEEL

All specifications and installation
instructions can also be found here:
www.straightcurve.info/039

Download here!

MORE INFO & INSTALL GUIDE



In-ground solutions



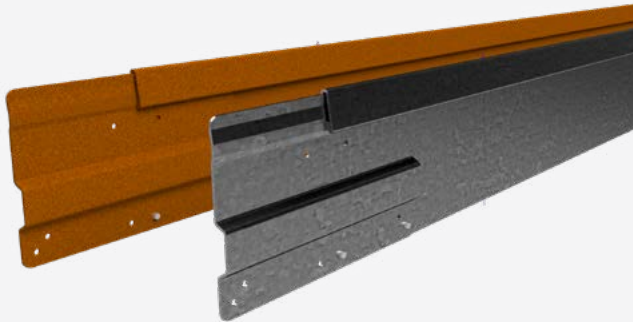
100mm high x 2200mm Rigidline™

IDEAL FOR

- ✔ Straight lines and geometric designs
- ✔ Straight garden paths and lawn areas
- ✔ Decorative stone and mulch areas
- ✔ Hard soils where trenching is difficult
- ✔ In-ground tree surrounds

USE AS

- ✔ Lawn barrier for non-invasive grasses
- ✔ Divider between gravels/woodchips/mulch etc
- ✔ Low feature bed



RL100WS WEATHERING STEEL
RL100GS GALVANISED STEEL

All specifications and installation
instructions can also be found here:
www.straightcurve.info/042

Download here!

MORE INFO & INSTALL GUIDE



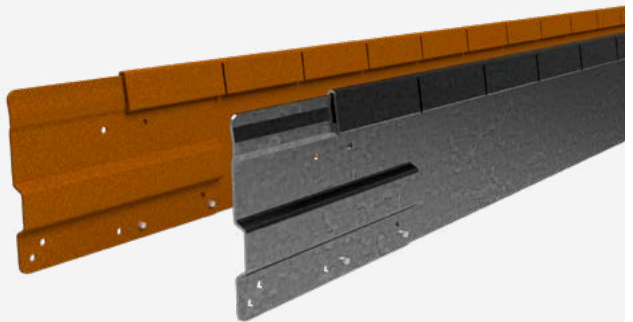
100mm high x 2200mm Flexline™

IDEAL FOR

- ✔ Organic and flowing lines
- ✔ Meandering garden paths
- ✔ Creating curved lawn areas
- ✔ Decorative stone and mulch areas
- ✔ Hard soils where trenching is difficult
- ✔ Gently sloping gardens

USE AS

- ✔ Lawn barrier for non-invasive grasses
- ✔ Divider between gravels/woodchips/mulch etc
- ✔ Low feature bed



FL100WS WEATHERING STEEL
FL100GS GALVANISED STEEL

All specifications and installation
instructions can also be found here:
www.straightcurve.info/041

Download here!

MORE INFO & INSTALL GUIDE



In-ground solutions

straightcurve®



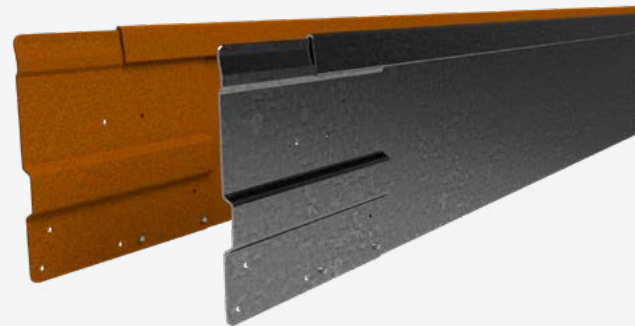
150mm high x 2200mm Rigidline™

IDEAL FOR

- ✓ Straight lines and geometric designs
- ✓ Straight garden paths and lawn areas
- ✓ Decorative stone and mulch areas
- ✓ Slightly raised or In-ground tree surrounds
- ✓ Keeping mulch off paths

USE AS

- ✓ Lawn barrier for invasive grasses
- ✓ Divider between gravels/woodchips/mulch etc
- ✓ Low feature bed



RL150WS WEATHERING STEEL
RL150GS GALVANISED STEEL

All specifications and installation
instructions can also be found here:
www.straightcurve.info/044

Download here!

MORE INFO & INSTALL GUIDE



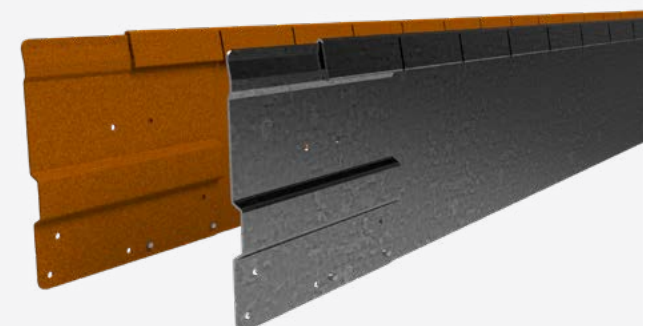
150mm high x 2200mm Flexline™

IDEAL FOR

- ✓ Organic and flowing lines
- ✓ Meandering garden paths
- ✓ Creating curved lawn areas
- ✓ Slightly raised or In-ground tree rings
- ✓ Keeping mulch off paths
- ✓ Gently sloping gardens

USE AS

- ✓ Lawn barrier for invasive grasses
- ✓ Divider between gravels/woodchips/mulch etc
- ✓ Low feature bed



FL150WS WEATHERING STEEL
FL150GS GALVANISED STEEL

All specifications and installation
instructions can also be found here:
www.straightcurve.info/043

Download here!

MORE INFO & INSTALL GUIDE



In-ground solutions



100mm high x 2200mm Hardline™

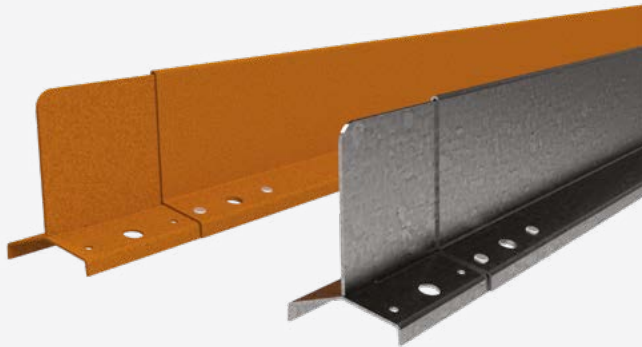
150mm high x 2200mm Hardline™

IDEAL FOR

- ✔ Designs featuring straight lines
- ✔ Small formal courtyard gardens
- ✔ Angular tree surrounds
- ✔ Discreet lines for Perfectionists!

USE AS

- ✔ Lawn barrier for non-invasive grasses
- ✔ Divider between gravels, wood chips, mulch etc
- ✔ Lock in paving or compacted/loose fill paths
- ✔ Low feature bed borders



HL100WS WEATHERING STEEL
HL100GS GALVANISED STEEL

All specifications and installation
instructions can also be found here:
www.straightcurve.info/045

Download here!

MORE INFO & INSTALL GUIDE

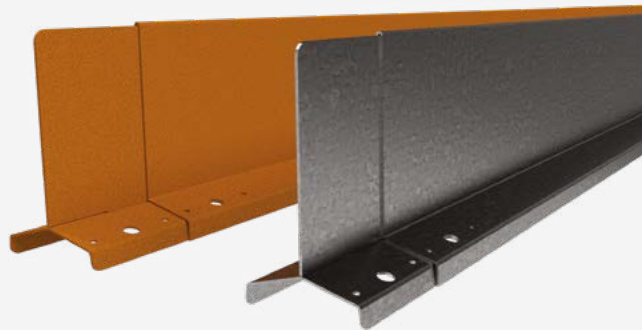


IDEAL FOR

- ✔ Designs featuring straight lines
- ✔ Small formal courtyard gardens
- ✔ Angular tree surrounds
- ✔ Showing a little more edge

USE AS

- ✔ Lawn barrier for invasive grasses
- ✔ Divider between gravels, wood chips, mulch etc
- ✔ Lock in paving or compacted/loose fill paths
- ✔ Low feature bed borders



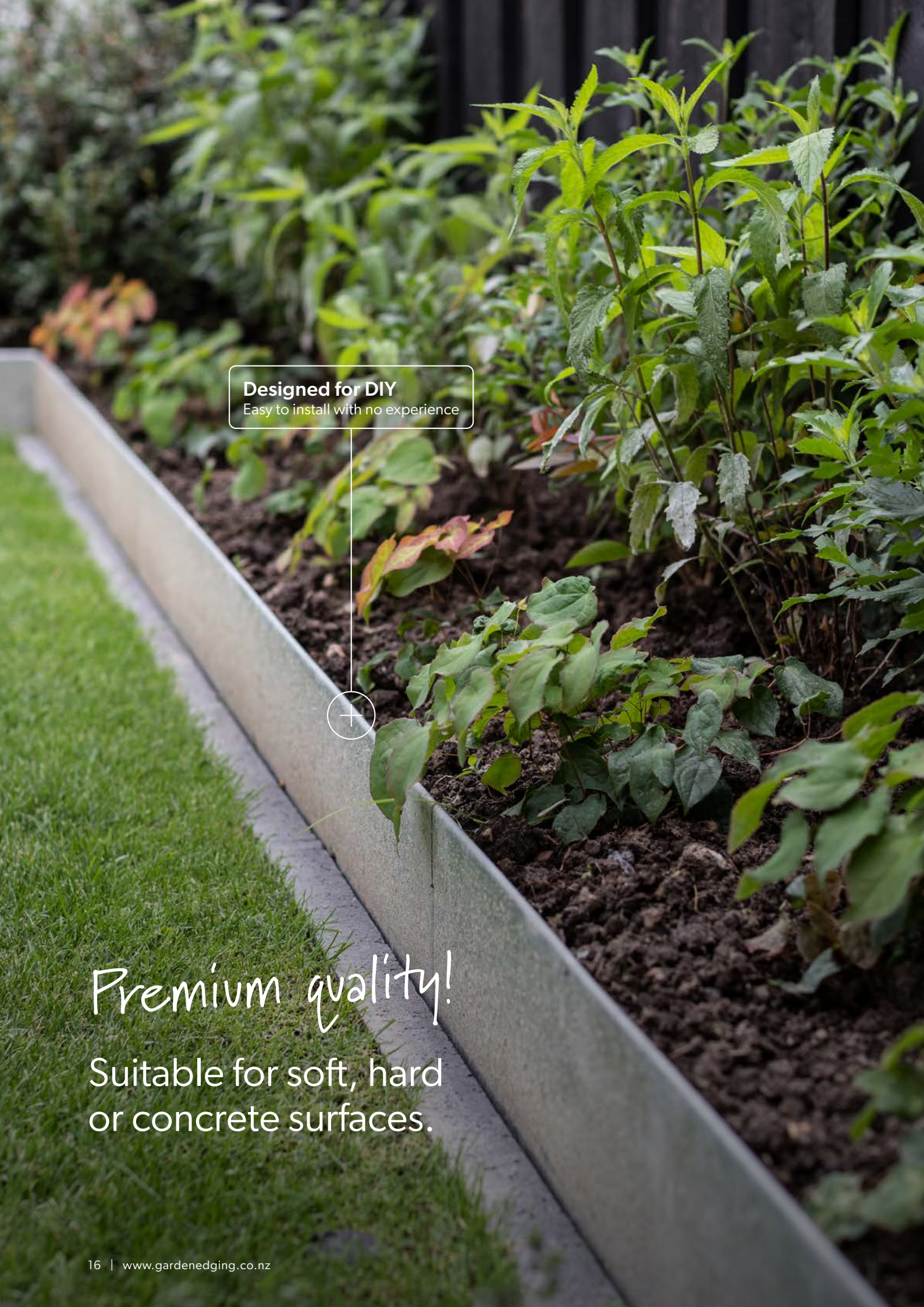
HL150WS WEATHERING STEEL
HL150GS GALVANISED STEEL

All specifications and installation
instructions can also be found here:
www.straightcurve.info/046

Download here!

MORE INFO & INSTALL GUIDE





Designed for DIY
Easy to install with no experience

Premium quality!
Suitable for soft, hard
or concrete surfaces.

straightcurve®

Above ground solutions

Perfect for!

- ✓ Raised garden beds
- ✓ Steps and multi levels
- ✓ Retaining walls



Please visit our website for full terms and conditions

Above ground solutions

straightcurve®



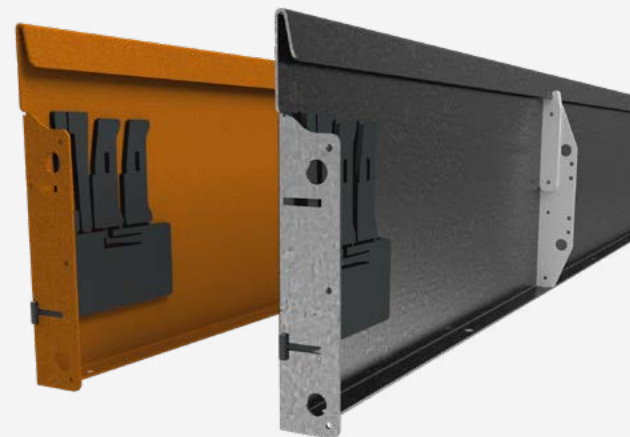
240mm high x 2160mm Rigidline™

IDEAL FOR

- ✓ Straight lines and geometric designs
- ✓ Raised, straight-sided feature beds
- ✓ Terracing a gentle slope
- ✓ Creating straight step faces
- ✓ Hard surface mounting i.e. rooftops/decking

USE AS

- ✓ Raised border edging
- ✓ Low retainers and steps
- ✓ High set lawn barrier for invasive grasses



RL240WS WEATHERING STEEL
RL240GS GALVANISED STEEL

All specifications and installation
instructions can also be found here:
www.straightcurve.info/048

Download here!

MORE INFO & INSTALL GUIDE



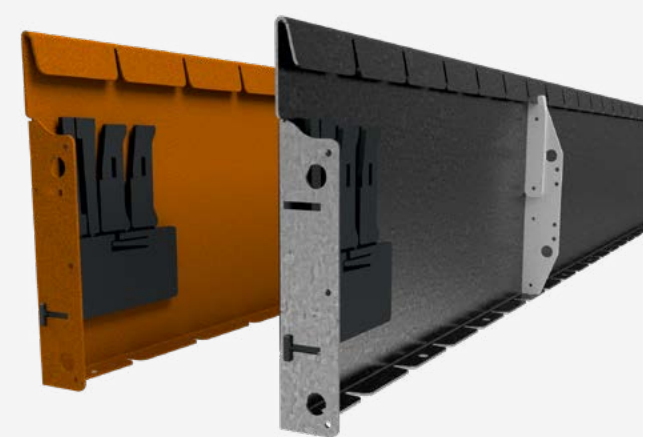
240mm high x 2160mm Flexline™

IDEAL FOR

- ✓ Organic and flowing lines
- ✓ Raised, curved feature gardens
- ✓ Terracing a gentle slope
- ✓ Creating curved step faces
- ✓ Hard surface mounting i.e. rooftops/decking

USE AS

- ✓ Raised border edging
- ✓ Low retainers and steps
- ✓ High set lawn barrier for invasive grasses



FL240WS WEATHERING STEEL
FL240GS GALVANISED STEEL

All specifications and installation
instructions can also be found here:
www.straightcurve.info/047

Download here!

MORE INFO & INSTALL GUIDE



Above ground solutions

straightcurve®



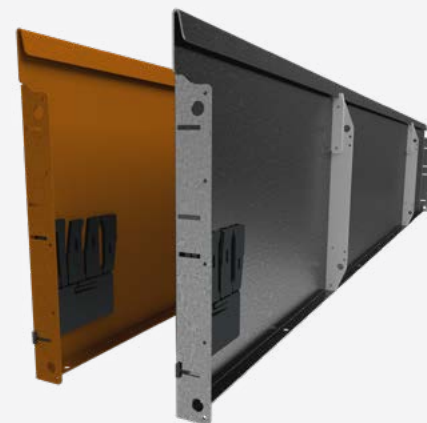
400mm high x 2160mm Rigidline™

IDEAL FOR

- ✓ Straight lines and geometric designs
- ✓ Raised, straight-sided feature gardens
- ✓ Kitchen garden beds
- ✓ Straight run terraces/retainers
- ✓ Hard surface mounting i.e. rooftops/decking

USE AS

- ✓ Raised border edging
- ✓ Medium height retainers
- ✓ Closed shape garden beds



RL400WS WEATHERING STEEL
RL400GS GALVANISED STEEL

All specifications and installation
instructions can also be found here:
www.straightcurve.info/050

Download here!

MORE INFO & INSTALL GUIDE



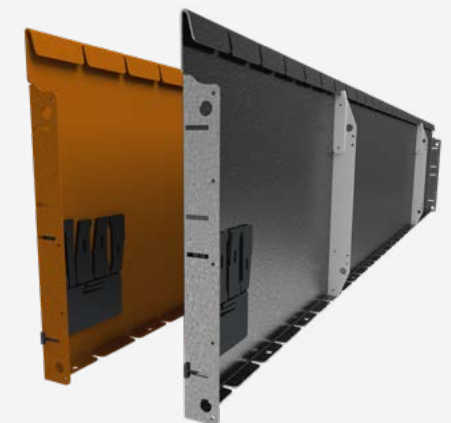
400mm high x 2160mm Flexline™

IDEAL FOR

- ✓ Organic and flowing lines
- ✓ Raised, curved feature gardens
- ✓ Kitchen garden beds
- ✓ Curved, sweeping terraces/retainers
- ✓ Hard surface mounting i.e. rooftops/decking

USE AS

- ✓ Raised border edging
- ✓ Medium height retainers
- ✓ Closed shape garden beds



FL400WS WEATHERING STEEL
FL400GS GALVANISED STEEL

All specifications and installation
instructions can also be found here:
www.straightcurve.info/049

Download here!

MORE INFO & INSTALL GUIDE



Above ground solutions

straightcurve®



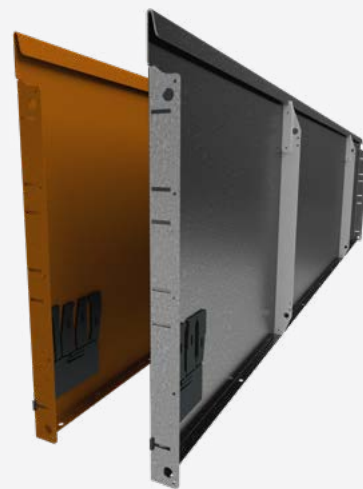
560mm high x 2160mm Rigidline™

IDEAL FOR

- ✓ Straight lines and geometric designs
- ✓ Raised, straight-sided feature gardens
- ✓ Kitchen garden beds
- ✓ Straight run terraces/retainers
- ✓ Hard surface mounting i.e. rooftops/decking

USE AS

- ✓ Raised border edging
- ✓ Medium height retainers
- ✓ Closed shape garden beds



RL560WS WEATHERING STEEL
RL560GS GALVANISED STEEL

All specifications and installation
instructions can also be found here:
www.straightcurve.info/052

Download here!

MORE INFO & INSTALL GUIDE



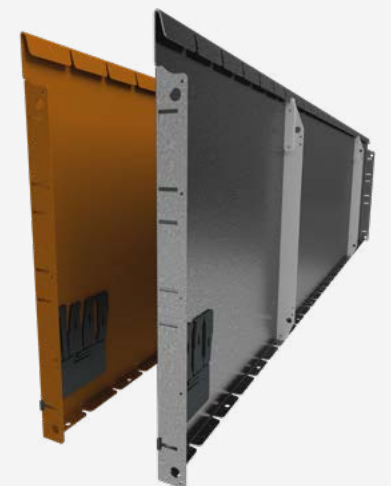
560mm high x 2160mm Flexline™

IDEAL FOR

- ✓ Organic and flowing lines
- ✓ Raised, curved feature gardens
- ✓ Kitchen garden beds
- ✓ Curved, sweeping terraces/retainers
- ✓ Hard surface mounting i.e. rooftops/decking

USE AS

- ✓ Raised border edging
- ✓ Medium height retainers
- ✓ Closed shape garden beds



FL560WS WEATHERING STEEL
FL560GS GALVANISED STEEL

All specifications and installation
instructions can also be found here:
www.straightcurve.info/051

Download here!

MORE INFO & INSTALL GUIDE



straightcurve®

Raised planter solutions

Quick to install
Designed with time-saving features

Perfect for!

- ✓ Planter boxes
- ✓ Raised garden beds
- ✓ Straight retaining walls

Stunning presentation

Neat and attractive finish
with hidden fixings.



Please visit our website for full terms and conditions

Fixed height planter box

Hidden Fixings with bolt down capabilities.



400mm high fixed height planter box



560mm high fixed height planter box

IDEAL FOR

- ✓ Square/Rectangular free standing beds
- ✓ Retaining walls
- ✓ Long 'garden barrier' beds
- ✓ Hard surface Areas, i.e. patios and rooftops
- ✓ Tables and bench seats (create own top)
- ✓ L and U shaped planter beds

USE AS

- ✓ Raised garden beds and planters
- ✓ Retainers (One wall or Closed Shape)
- ✓ Outdoor furniture bases
- ✓ Storage boxes



AVAILABLE PANEL LENGTHS

400MM	600MM	800MM	1000MM	1200MM	2000MM
-------	-------	-------	--------	--------	--------

Combine panels to make any size in 200mm increments

FHL400WS WEATHERING STEEL
FHL400GS GALVANISED STEEL

All specifications and installation
instructions can also be found here:
www.straightcurve.info/053

Download here!

MORE INFO & INSTALL GUIDE

IDEAL FOR

- ✓ Square/Rectangular free standing beds
- ✓ Retaining walls
- ✓ Long 'garden barrier' beds
- ✓ Hard surface Areas, i.e. patios and rooftops
- ✓ Tables and bench seats (create own top)
- ✓ L and U shaped planter beds

USE AS

- ✓ Raised garden beds and planters
- ✓ Retainers (One wall or Closed Shape)
- ✓ Outdoor furniture bases
- ✓ Storage boxes



AVAILABLE PANEL LENGTHS

400MM	600MM	800MM	1000MM	1200MM	2000MM
-------	-------	-------	--------	--------	--------

Combine panels to make any size in 200mm increments

FHL560WS WEATHERING STEEL
FHL560GS GALVANISED STEEL

All specifications and installation
instructions can also be found here:
www.straightcurve.info/055

Download here!

MORE INFO & INSTALL GUIDE

Why use Straightcurve®?



Jaim - Green Horizons Landscape Construction



Alessio - Alessio's Gardens



Jaiden - Deep Green Landscaping

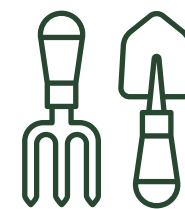


Mirek - Waterwise Landscaping

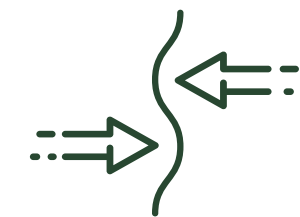


Wanda - Wanda's Gardening & Landscaping

Landscaper & DIY user benefits



DESIGNED
FOR DIY



NATURALLY FLEXIBLE,
EASY TO CURVE



STRAIGHT LINES
STAY TRUE



DISCREET, NEAT
JOINING



QUICK TO
INSTALL



SMOOTH ROLLED
TOP EDGES

GREAT BENEFITS

- ✓ Easy and quick installation
- ✓ Each connection is always right
- ✓ Suitable for soft, hard or concrete surfaces
- ✓ Natural looking finish
- ✓ Durable and strong – won't crack, warp or shift later
- ✓ Easy combinations of rigid and flexible edges.
- ✓ Products made for straight lines and curves
- ✓ No need to concrete edges in place
- ✓ No welding required
- ✓ Sold in sets with stakes and connectors.

	IMAGE	PREFIX	HEIGHT (mm)	MATERIAL (WS/GS)	LENGTH (S) (mm)	USE AS	IDEAL FOR	ACCESSORIES (NOT INCLUDED)
IN-GROUND SOLUTIONS		FL	75	WS / GS	2200	<ul style="list-style-type: none"> Divider between gravels/woodchips/ mulch Paving, compacted stone & artificial turf edge Lawn edge for non-invasive grasses 	<ul style="list-style-type: none"> Organic & flowing lines Meandering garden paths Decorative stone areas Creating curved lawn areas Rounded tree surrounds Hard soils where trenching is difficult 	<ul style="list-style-type: none"> 2 x Tek Screws (12G x 16mm) or 2 x pop rivets (4mm shaft)
		RL	75	WS / GS	2200	<ul style="list-style-type: none"> Divider between gravels/woodchips/ mulch Paving, compacted stone & artificial turf edge Lawn edge for non-invasive grasses 	<ul style="list-style-type: none"> Straight lines & geometric designs Straight garden paths & lawn areas Decorative stone areas Angular tree surrounds Hard soils where trenching is difficult 	<ul style="list-style-type: none"> 500mm Corner piece 2 x Tek Screws (12G x 16mm) or 2 x pop rivets (4mm shaft)
		FL	100	WS / GS	2200	<ul style="list-style-type: none"> Lawn barrier for non-invasive grasses Divider between gravels/woodchips/mulch Low feature bed 	<ul style="list-style-type: none"> Organic & flowing lines Meandering garden paths Creating curved lawn areas Decorative stone and mulch areas Hard soils where trenching is difficult Gently sloping gardens 	<ul style="list-style-type: none"> 500mm Corner piece Hard surface fixing bracket 2 x Tek Screws (12G x 16mm) or 2 x pop rivets (4mm shaft)
		RL	100	WS / GS	2200	<ul style="list-style-type: none"> Lawn barrier for non-invasive grasses Divider between gravels/woodchips/mulch Low feature bed 	<ul style="list-style-type: none"> Straight lines & geometric designs Straight garden paths & lawn areas Decorative stone & mulch areas Hard soils where trenching is difficult In-ground tree surrounds 	<ul style="list-style-type: none"> 500mm Corner piece Hard surface fixing bracket 2 x Tek Screws (12G x 16mm) or 2 x pop rivets (4mm shaft)
		FL	150	WS / GS	2200	<ul style="list-style-type: none"> Lawn barrier for invasive grasses Divider between gravels/woodchips/mulch Low feature bed 	<ul style="list-style-type: none"> Organic & flowing lines Meandering garden paths Creating curved lawn areas Slightly raised or In-ground tree rings Keeping mulch off paths Gently sloping gardens 	<ul style="list-style-type: none"> 500mm Corner piece Hard surface fixing bracket 2 x Tek Screws (12G x 16mm) or 2 x pop rivets (4mm shaft)
		RL	150	WS / GS	2200	<ul style="list-style-type: none"> Lawn barrier for invasive grasses Divider between gravels/woodchips/mulch Low feature bed 	<ul style="list-style-type: none"> Straight lines & geometric designs Straight garden paths & lawn areas Decorative stone & mulch areas Slightly raised or In-ground tree surrounds Keeping mulch off paths 	<ul style="list-style-type: none"> 500mm Corner piece Hard surface fixing bracket 2 x Tek Screws (12G x 16mm) or 2 x pop rivets (4mm shaft)
		HL	100	WS / GS	2200	<ul style="list-style-type: none"> Lawn barrier for non-invasive grasses Divider between gravels, wood chips, mulch Lock in paving or compacted/loose fill paths Low feature bed borders 	<ul style="list-style-type: none"> Designs featuring straight lines Small formal courtyard gardens Angular tree surrounds Discreet lines for Perfectionists! 	<ul style="list-style-type: none"> 500mm Corner piece 4 x Tek Screws (12G x 16mm) or 4 x pop rivets (4mm shaft)
		HL	150	WS / GS	2200	<ul style="list-style-type: none"> Lawn barrier for invasive grasses Divider between gravels, wood chips, mulch Lock in paving or compacted/loose fill paths Low feature bed borders 	<ul style="list-style-type: none"> Designs featuring straight lines Small formal courtyard gardens Angular tree surrounds Showing a little more edge 	<ul style="list-style-type: none"> 500mm Corner piece 4 x Tek Screws (12G x 16mm) or 4 x pop rivets (4mm shaft)
ABOVE GROUND SOLUTIONS		FL	240	WS / GS	2160	<ul style="list-style-type: none"> Raised border edging Low retainers & steps High set lawn barrier for invasive grasses 	<ul style="list-style-type: none"> Organic & flowing lines Raised, curved feature gardens Terracing a gentle slope Creating curved step faces Hard surfaces i.e. rooftops/decking 	<ul style="list-style-type: none"> Small anchor post (2 x Tek screws 12G x 16mm) Corner piece (arm lengths: 255mm) Joining sleeve (6 x Tek screws 12G x 16mm) Universal bracing set (turnbuckle/chain/stake)
		RL	240	WS / GS	2160	<ul style="list-style-type: none"> Raised border edging Low retainers & steps High set lawn barrier for invasive grasses 	<ul style="list-style-type: none"> Straight lines & geometric designs Raised, straight-sided feature beds Terracing a gentle slope Creating straight step faces Hard surfaces i.e. rooftops/decking 	<ul style="list-style-type: none"> Small anchor post (2 x Tek screws 12G x 16mm) Corner piece (arm lengths: 255mm) Joining sleeve (6 x Tek screws 12G x 16mm) Universal bracing set (turnbuckle/chain/stake)
		FL	400	WS / GS	2160	<ul style="list-style-type: none"> Raised border edging Medium height retainers Closed shape garden beds 	<ul style="list-style-type: none"> Organic & flowing lines Raised, curved feature gardens Kitchen garden beds Curved, sweeping terraces/retainers Hard surfaces i.e. rooftops/decking 	<ul style="list-style-type: none"> Universal bracing set OR Large anchor post (4 x Tek Screws 12G x 16mm) Corner piece (arm lengths: 255mm) Joining sleeve (8 x Tek Screws 12G x 16mm)
		RL	400	WS / GS	2160	<ul style="list-style-type: none"> Raised border edging Medium height retainers Closed shape garden beds 	<ul style="list-style-type: none"> Straight lines & geometric designs Raised, straight-sided feature gardens Kitchen garden beds Straight run terraces/retainers Hard surfaces i.e. rooftops/decking 	<ul style="list-style-type: none"> Universal bracing set OR Large anchor post (4 x Tek Screws 12G x 16mm) Corner piece (arm lengths: 255mm) Joining sleeve (8 x Tek Screws 12G x 16mm)
		FL	560	WS / GS	2160	<ul style="list-style-type: none"> Raised border edging Medium height retainers Closed shape garden beds 	<ul style="list-style-type: none"> Organic & flowing lines Raised, curved feature gardens Kitchen garden beds Curved, sweeping terraces/retainers Hard surfaces i.e. rooftops/decking 	<ul style="list-style-type: none"> Universal bracing set OR Large anchor post (4 x Tek Screws 12G x 16mm) Corner piece (arm lengths: 255mm) Joining sleeve (10 x Tek Screws 12G x 16mm)
		RL	560	WS / GS	2160	<ul style="list-style-type: none"> Raised border edging Medium height retainers Closed shape garden beds 	<ul style="list-style-type: none"> Straight lines & geometric designs Raised, straight-sided feature gardens Kitchen garden beds Straight run terraces/retainers Hard surfaces i.e. rooftops/decking 	<ul style="list-style-type: none"> Universal bracing set OR Large anchor post (4 x Tek Screws 12G x 16mm) Corner piece (arm lengths: 255mm) Joining sleeve (8 x Tek Screws 12G x 16mm)
RAISED PLANTERS		FHL	400	WS / GS	400 600 800 1000 1200 2000	<ul style="list-style-type: none"> Raised garden beds & planters Retainers (one wall or closed shape) Outdoor furniture bases Storage boxes 	<ul style="list-style-type: none"> Square/rectangular free standing beds Retaining walls Long 'garden barrier' beds Hard surfaces i.e. patios & rooftops Tables & bench seats (create own top) 	<ul style="list-style-type: none"> Straight Join Set (12 x Tek Screws 12G x 16mm) Closed Corner Set (6 x Tek Screws 12G x 16mm) Open Corner Set (8 x Tek Screws 12G x 16mm) Standard crossover bracing strap Universal Bracing Set Large anchor post + Fixing lips (sold separately) (require 6 x Tek Screws 12G x 16mm)
		FHL	560	WS / GS	400 600 800 1000 1200 2000	<ul style="list-style-type: none"> Raised garden beds & planters Retainers (one wall or closed shape) Outdoor furniture bases Storage boxes 	<ul style="list-style-type: none"> Square/rectangular free standing beds Retaining walls Long 'garden barrier' beds Hard surfaces i.e. patios & rooftops Tables & bench seats (create own top) 	<ul style="list-style-type: none"> Straight Join Set (12 x Tek Screws 12G x 16mm) Closed Corner Set (6 x Tek Screws 12G x 16mm) Open Corner Set (8 x Tek Screws 12G x 16mm) Standard crossover bracing strap Universal Bracing Set Large anchor post + Fixing lips (sold separately) (require 6 x Tek Screws 12G x 16mm)
FL - Flexible		RL - Rigid	HL - Super Rigid	FHL- Fixed Planter	WS = Weathering	GS = Galvanised		

straightcurve®

New Zealand Distribution Partner:
027 2824453
sales@gardenedging.co.nz

Distributor:

www.gardenedging.co.nz