

straightcurve

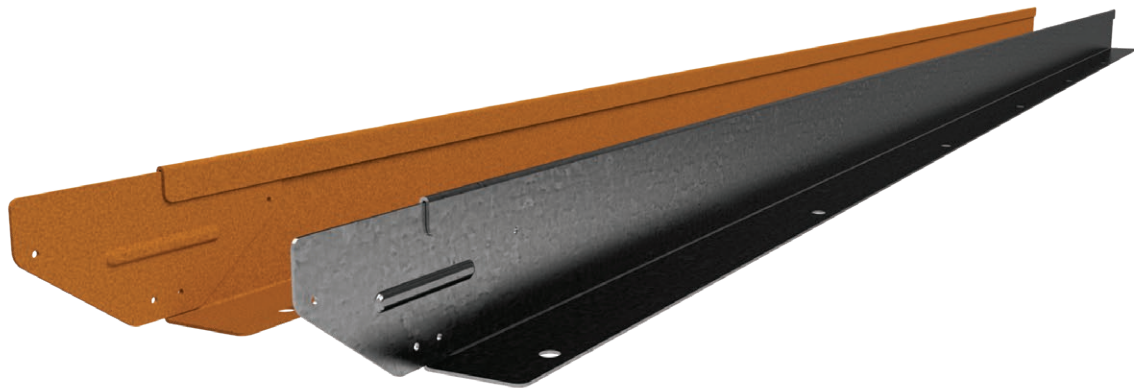
Specifications

75mm Rigidline

LENGTH 2200mm | TOP THICKNESS 6mm

FINISHES

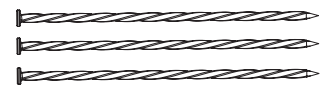
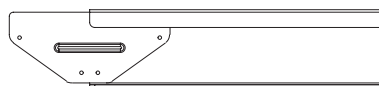
- Galvanised Steel
- Weathering Steel



Steel plate thickness 1.6mm

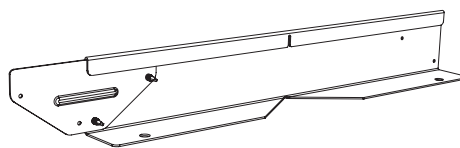
SOLD AS SET INCLUDING

- ✓ Connector plate (pre-attached)
- ✓ 3 x galvanised spikes, 300mm long



ADDITIONAL ACCESSORIES

- ✓ 500mm Corner piece (bend to desired angle)



Installation guide 75mm Rigidline

*Scan me for
Video installation!*



Scan the code or follow the link below for installation video.
75mm Rigidline installation video

PREPARATIONS

Level the base before you start; compacting the base is recommended. This product can be used on a sandy base as well as on compacted roadbase.

CORNERS

Standard corners are available for purchase*, but you can choose to make your own. Simply cut away a V in the shoulder foot (at least 120 degrees) to allow a space to bend into by hand.

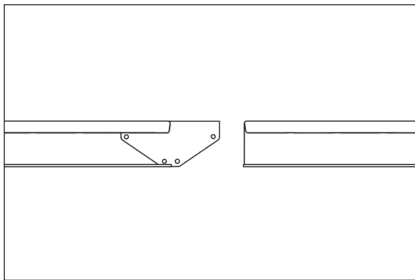
REQUIRED FIXINGS

- ✓ 2 x Tek Screws (12G x 16mm) or
- ✓ 2 x pop rivets (3mm shaft)

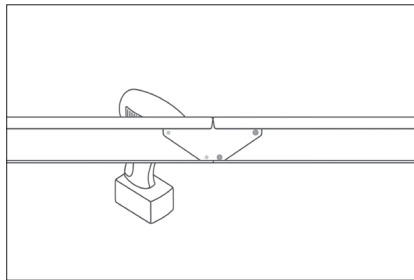
TIP

- ✓ Point the feet inward if infilling with crush or stone for a path. Compacting the fill then increases the strength of the edge.
- ✓ Position whole run first before fixing in place, starting from one end.

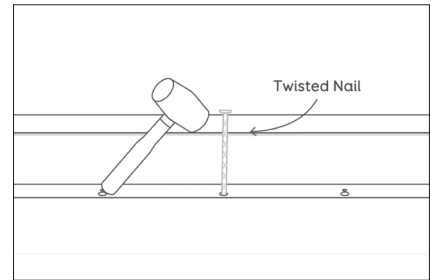
STEP 1 - JOIN



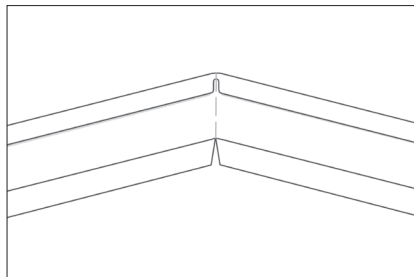
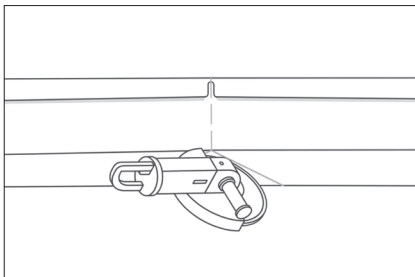
STEP 2 - SCREW (OR RIVET)



STEP 3 - FIX



MAKE CORNER - NOTCH/SCORE WITH GRINDER



PRE-MADE CORNER*

